

#RARENESSAWARENESS

**LET YOUR
COLOURS
SHINE!**



**YOU ARE BOLD.
YOU ARE BRIGHT.
YOU ARE RARE.**

Thank you for taking the first step in creating much needed #RarenessAwareness for the #lin15 South Africans afflicted by a rare disease.

**WHEN TO ADD
YOUR VOICE** →





WHEN

Rare Disease Day takes place on the Tuesday 28th of February but we are asking you to **#ShareYourColours** for the entire month of Feb to create as much **#RarenessAwareness** as possible.

**WHERE TO ADD →
YOUR VOICE**

WHERE

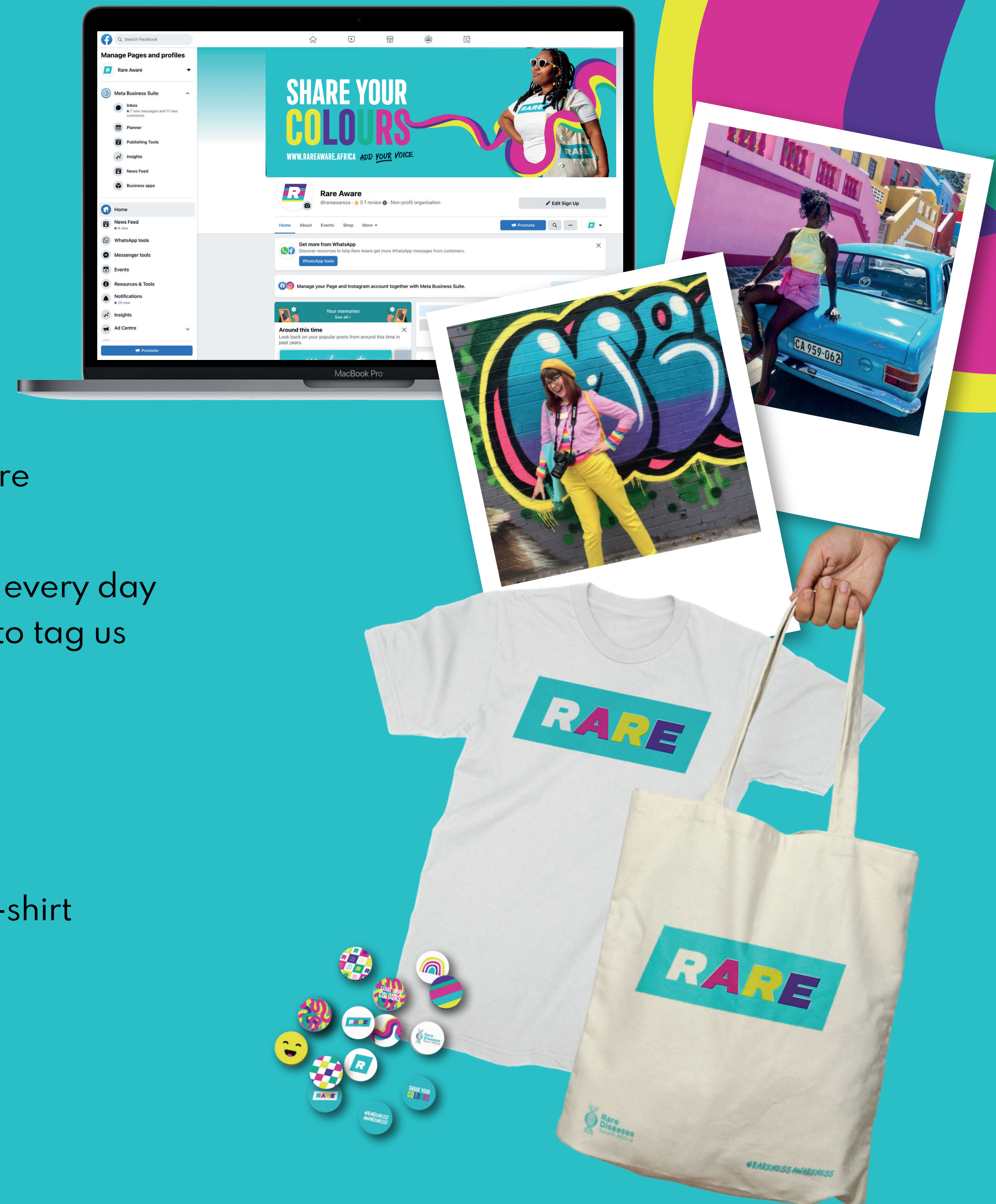
Your social media accounts.

HOW TO ADD
YOUR VOICE →

HOW

EXPECTATIONS

- **Follow us** on our socials **Facebook** @rareawareza **Instagram** @rare_aware **Twitter** @rare_aware
- **Change** your social media profile pic and cover image on 1 February 2023
- **Take part** in our 28 day Instagram Challenge or use the Tweet Sheet to create **#RarenessAwareness** every day OR create your own content to **#ShareYourColours** (min 1 post and 3 stories per week) - remember to tag us
- **Place** our web banner on your website and link it to www.rareaware.africa
- **Include** our digital flyer in your newsletter
- **Change** your screensaver, desktop or Zoom/Teams background
- **Add** a Rare Aware strip to your email signature
- **Declare** the 28th of February 2023 **#ShareYourColours** day and wear your jeans and Rare Aware T-shirt
- **Join** others from around the world and light up your home on the 28th of February 2023



RARE MERCH



UNISEX T – R150

Available in:
S, M, L, XL, 2XL, 3XL, 4XL, 5XL



STICKERS–R50

x 10 stickers per pack
25mm x 25mm



TOTE BAG–R85

Printed (one side) tote bag



SCRUNCHIES–R35

Rainbow or Rare Blue



STARTER PACK–R250

Pack includes:
Unisex T, Tote Bag + Stickers

GET IN TOUCH →

STILL NOT SURE?

GET IN TOUCH

Telephone +27 10 594 3844
Hotline 072 476 7552
Email rdd@rarediseases.co.za

**FOLLOW US ON
THE SOCIALS**

Facebook @rareawareza
Instagram @rare_aware
Twitter @rare_aware



THANK YOU

WE CAN'T WAIT TO SEE YOU IN ACTION!



FIND US ONLINE
WWW.RAREAWARE.AFRICA